

RFQ – Des Moines International Airport Terminal Project – Exterior Des Moines, Iowa

Entry Deadline: March 22, 2024

Opportunity:

The Des Moines International Airport and the Greater Des Moines Public Art Foundation seek artists / artist teams living and working in Iowa to create artworks for an exterior site of the new Des Moines International Airport Terminal, which will open in 2026. The \$445.4 million terminal will double the capacity of the current terminal, boosting central Iowa's economic development.

The Des Moines International Airport was established in 1933. The terminal that is still in use today was built in 1948 and sees over 3 million travelers a year, serving as the gateway to Iowa, America's Heartland. Iowa is known for its openness: open minds, open lands, and open skies. Through this new terminal project, the Des Moines International Airport will increase air service and accommodation by an estimated 1 million travelers. The highly visible spaces in the new terminal provide the opportunity for expansive and engaging installations.

The [Greater Des Moines Public Art Foundation](#) will oversee the artist selection and installation processes. The Greater Des Moines Public Art Foundation is a non-profit organization that places art in increasing numbers of visible public spaces through public-private collaborations and partnerships. We educate and engage the community in an awareness and understanding of public art identity and culture.

The Greater Des Moines Public Art Foundation is a catalyst for outstanding public art projects with the power to inspire people who reside in, work in,

and visit Greater Des Moines, and to shape a fair and just community. With our priorities, we seek to be a world-class destination for transformative public art.

Eligibility:

Professional visual artists, or teams of artists, at least 18 years of age **who are living and working in Iowa** are eligible. Emerging artists are encouraged to apply. Preference will be given to artists whose work is historically underrepresented and / or is not currently represented by public art in Greater Des Moines. Employees and Board Members of the City of Des Moines, Iowa, the Des Moines Airport Authority, and the Greater Des Moines Public Art Foundation are ineligible to apply.

Commission Description:

The exterior location, or **Site 5**, is comprised of subsites 5a and 5b. The details of **Site 5** are described in the **attached appendix**. Artists are encouraged to apply for both sites 5a and 5b, as the selected artworks will be located across from one another. However, it is possible that separate proposals will be selected.

All-inclusive target budget for Site 5 (both 5a and 5b) should not exceed \$80,000 for Site 5 (both 5a and 5b).

The budget for **Site 5 (both 5a and 5b)** includes, but is not limited to, stipends, \$500 design fee, travel, fabrication, any proposed site alterations, supplies, material costs, delivery, approval by an Iowa-licensed engineer, lighting, installation, and a three-year workmanship warranty pertaining to any defects. *When preparing your budget, please consider and specify whether you are applying for Sites 5a, 5b, or both.*

Selection Process: A selection panel consisting of representatives from the Greater Des Moines Public Art Foundation, the Des Moines International Airport, and community stakeholders will select the final artist/artist team.

Submission Materials and Instructions:

- Artist contact information: email, phone number, address, website, social media if applicable.
- Written letter of interest describing how you envision your work contributing to the aims of the new terminal project. The letter of interest should not exceed 2 pages.
- A relevant body of work that demonstrates conceptual, aesthetic, and technical mastery in the artistic medium / media relevant to your proposal. Include up to 5 images and / or up to 3 video links. Links to images are also acceptable.
- A list providing details of your selected body of artworks, including the title, year, materials, dimensions, and brief budget.
- Biographical information and resume/CV. If artist team, please provide biographical information and resume/CV for all team members.
- The contact information of 3 professional references.
- Please submit all materials as **one PDF document** via email to executive.director@dsmpublicartfoundation.org.

The Selection Panel will use the following evaluation criteria to select an artist or artist team:

- Works of art in the artist's portfolio are original, innovative, of exceptional quality and enduring value.
- Works of art in the artist's portfolio indicate that the artist is sensitive to the social, economic, cultural, political, historical, and physical

- context of the site, the Airport Authority, the surrounding communities, and the State of Iowa. We are committed to sustaining a diverse and inclusive community. We recognize that multiple voices and perspectives enrich our work.
- Works of art in the artist's portfolio utilize materials and processes likely to contribute to the longevity of public works of art.

Up to 5 finalists will be chosen to create a proposal. Each finalist will be provided a \$500 design fee to generate a concept.

Timeline:

January 25 2024: RFQ Announced

March 22, 2024, 5:00pm CDT: RFQ deadline. Email submissions to executive.director@dsmpublicartfoundation.org.

May 1, 2024: Finalists notified

June 6, 2024, 5:00pm CDT: Final Proposal deadline

Selected artist(s) will be notified in July

Selected artists / artist teams will be required to sign a contract outlining expectations, timelines and requirements.

Please direct any questions to:

Alexa McCarthy, PhD

Executive Director

Greater Des Moines Public Art Foundation

executive.director@dsmpublicartfoundation.org

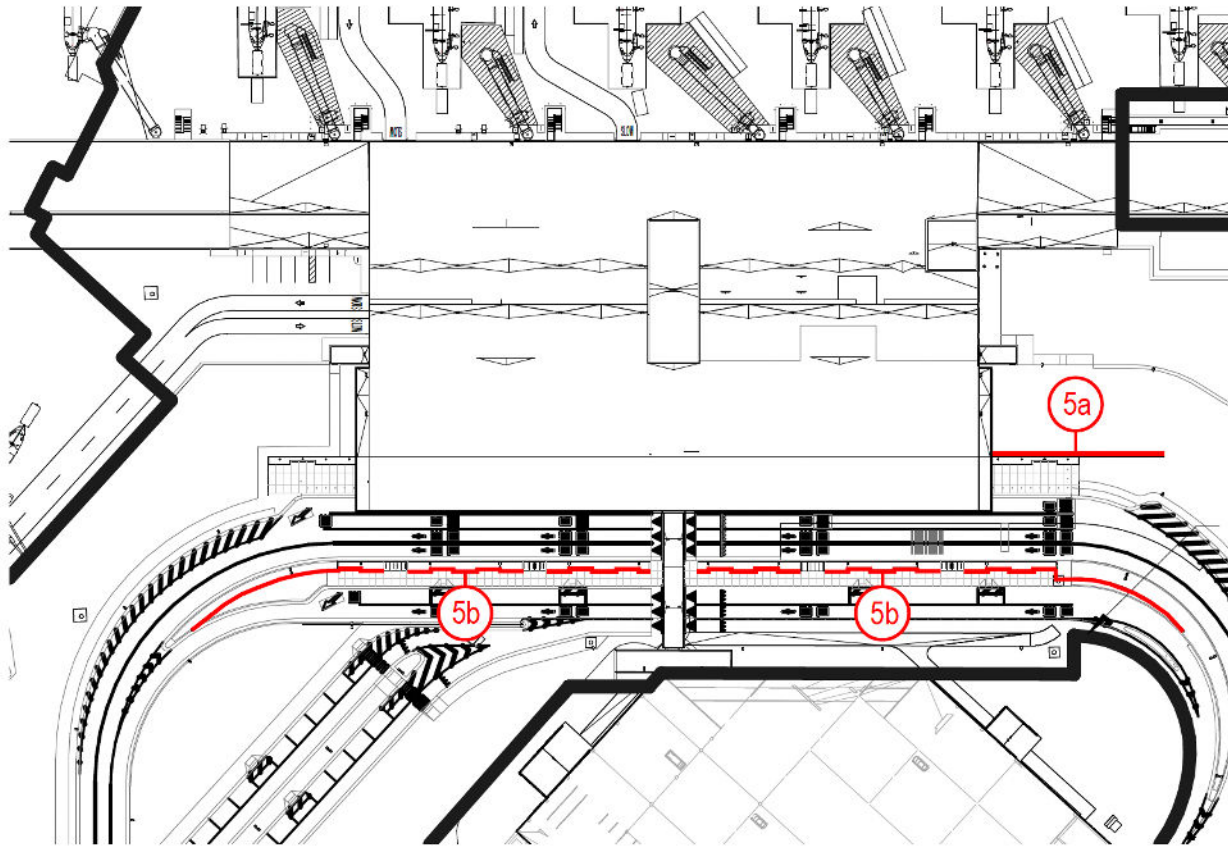
Des Moines International Airport Project
RFQ Appendix
January 2024



Site 5: Exterior Approach to Terminal



Site 5: Exterior Approach to Terminal – Overview of subsites 5a and 5b



Landside Site Plan - Passenger and Commercial Curbs
Sitewall and Screening Locations

Site 5a: Exterior Approach to Terminal – Sitewall



Site 5a: Exterior Approach to Terminal – Sitewall

Material

The sitewall is constructed of precast concrete panels that include a dark gray integral color to match the precast finish elsewhere in the project.

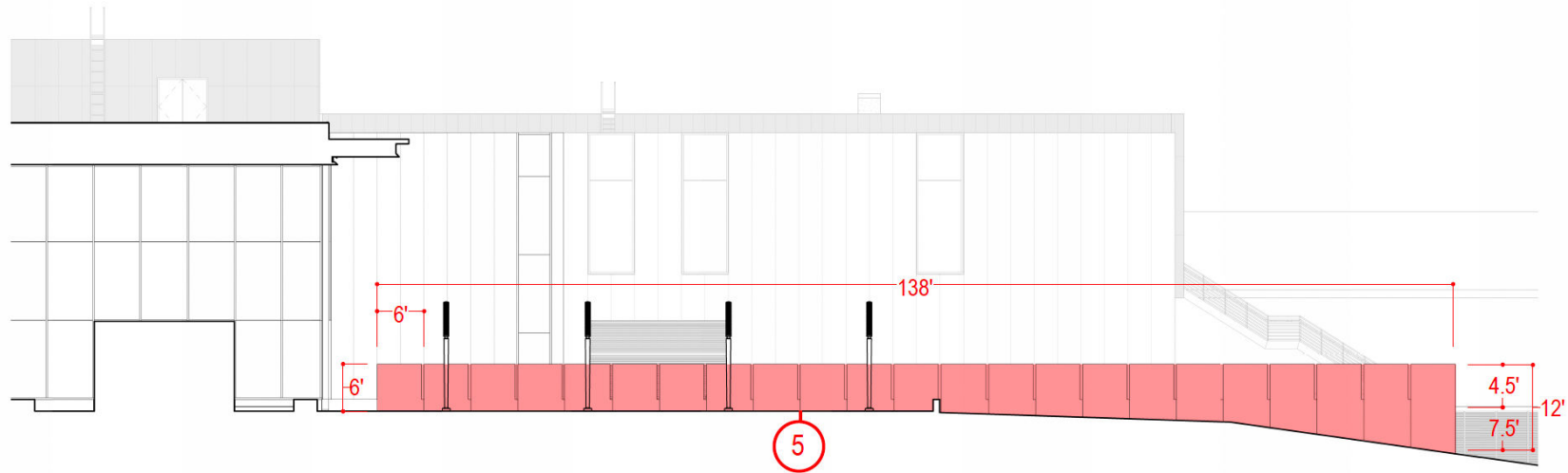
Finish

A sacrificial coating to protect against graffiti, subject to proposed artwork, will also be necessary. The anti-graffiti coating data sheet will be available to selected artist(s), which describes the coating as a substrate and indicates potential interactions with paint or other surface-applied materials.

Gravity Load

100 pounds per square foot max.

Site 5a: Exterior Approach to Terminal – Sitewall



Exterior Elevation

Landside Sitewall along Cowles Drive Approach

Site 5b: Exterior Approach to Terminal – Commercial Curb Screening



Site 5b: Exterior Approach to Terminal – Commercial Curb Screening

Materials

The commercial curb screening is comprised of perforated aluminum plate, 1/8" thick.

Finish

Kynar (PVDF paint), color not yet specified, but is likely to be an off-white to match the aluminum finish featured elsewhere in and around the terminal.

Lateral Resistance Capacity

200 lbs, similar to guardrail capacity.

Gravity Load

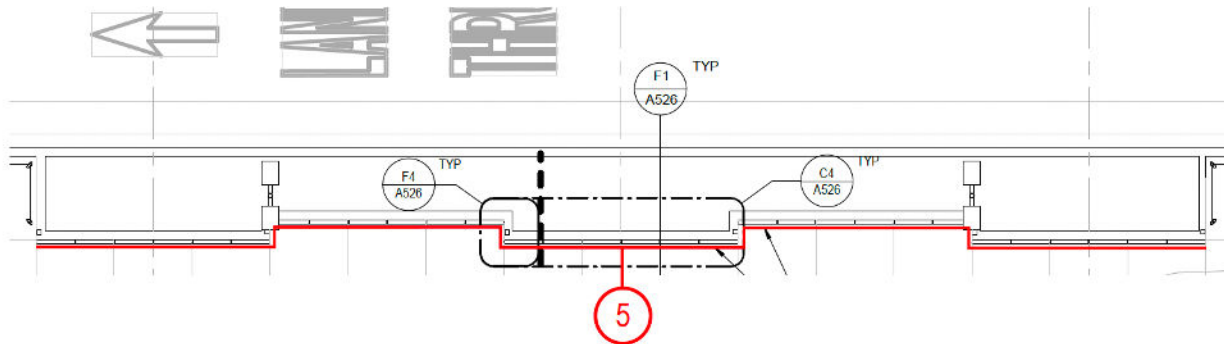
10lbs per linear foot of plate.

Clearance Requirements

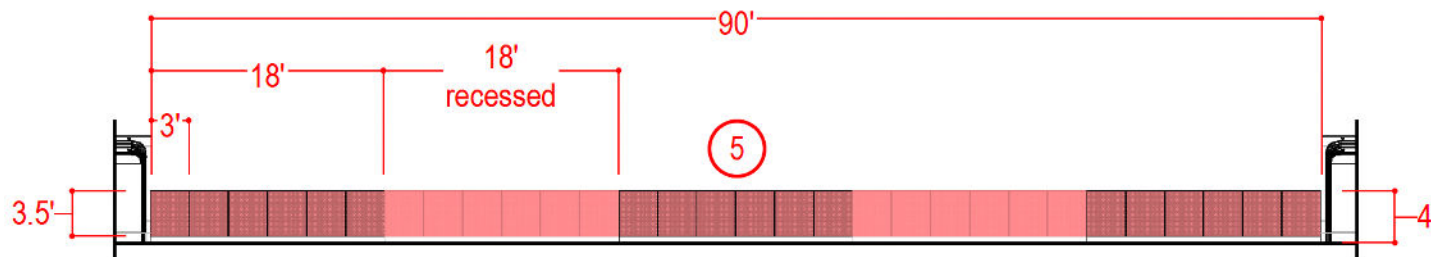
Projection into pedestrian aisle of commercial curb screening to be limited to 4" from face of screen; behind the screen (north, in the direction of the terminal) are concrete planters, which have no specific clearance requirements, but the same 4" projection limit applies due to structural loading.

Site 5b is approximately 650 linear feet in total, roughly divided in two by pedestrian walkway and crosswalk below (see following page).

Site 5b: Exterior Approach to Terminal – Commercial Curb Screening



Enlarged Plan - Typical Screen Segment
 Screening along Commercial Curb



Enlarged Elevation - Typical Screen Segment
 Screening along Commercial Curb